

# Viatti summer tires for sports and crossover utility vehicles

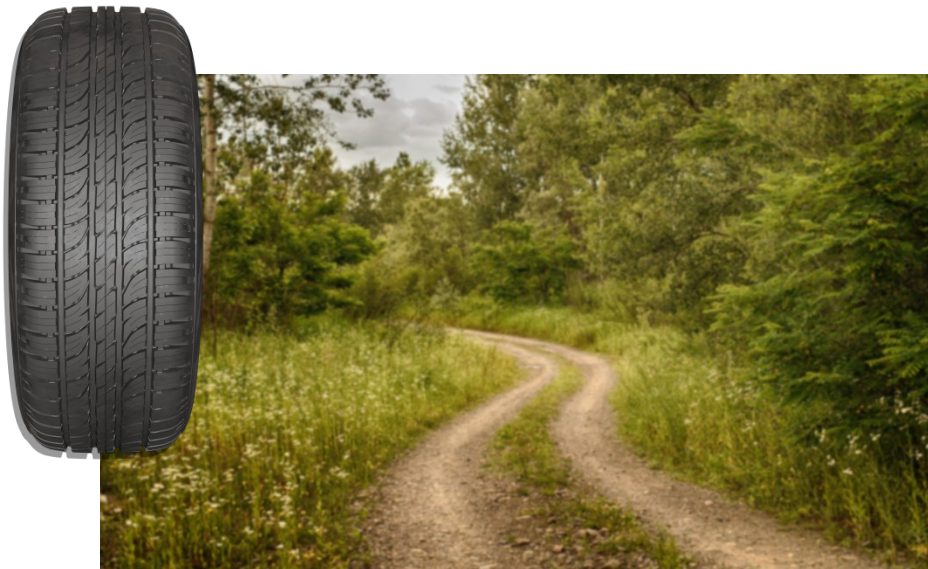


Nizhnekamsk, April 2020

**KAMA TYRES**  
ЭКСПЕРТИЗА. УВЕРЕННОСТЬ. ЛИДЕРСТВО

## Viatti Bosco A/T (All Terrain)

The tire is designed for driving on hard road surfaces and allows feeling oneself confidently on country roads and light off-road conditions.



### Advantages

- + Confident driving on light off-road and country roads
- + Rubber compound resistant to environmental effect
- + Self-cleaning tread pattern allowing the release of mud

## Viatti Bosco H/T (Highway Terrain)

The tire is designed for use exclusively on asphalt roads, the best choice for urban and highway roads.



### Advantages

- + High level of traction and handling
- + Fuel efficiency
- + Acoustic comfort

## Light off-road tires



**VIATEE**

**Bosco A/T**

### DirtMove

Tread pattern with wide lateral grooves and special lugs in the shoulder area which together increase the vehicle's cross-country capability

### HydroSafe

Longitudinal grooves of non-uniform geometry and sharp-facet central blocks enable the tires to effectively break mud and water film and their removal from the contact patch

### HighStab

Central reinforcing rib and reinforced longitudinal blocks provide high directional stability and high-speed maneuvering capability



## Hard surface tires



**VIATEE**

**Bosco H/T**

### Tread

Tread pattern with strong grip on wet surface, 4 longitudinal grooves effectively remove water from the contact patch

### Sipes

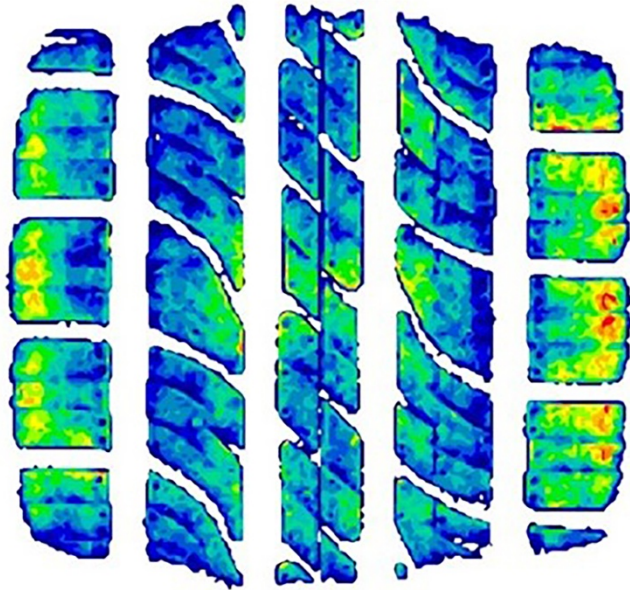
Multifunctional sipes improve traction in the rain, prevent uneven tread wear, and provide stable behavior in complex situation

### Shoulder area

Reinforced shoulder blocks with curved edges provide efficiency during longitudinal acceleration, prevent slipping when maneuvering

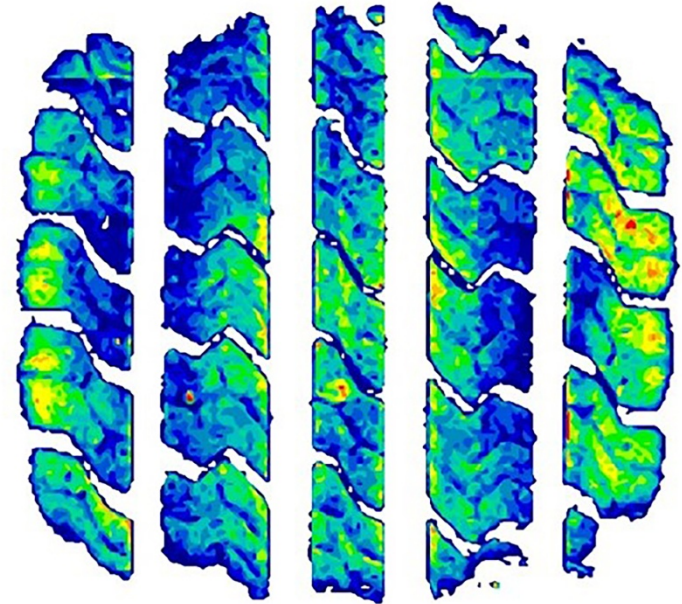


**VIAČEĚI**  
Bosco A/T



< 4,1 %

**VIAČEĚI**  
Bosco H/T



Due to the optimally constructed tire profile, the calculation of its design and the saturation of the tread pattern, the contact patch area of **Bosco H/T** tire is **4.1%** larger than that of the **Bosco A/T** tire.



Improved braking performance on dry and wet surfaces



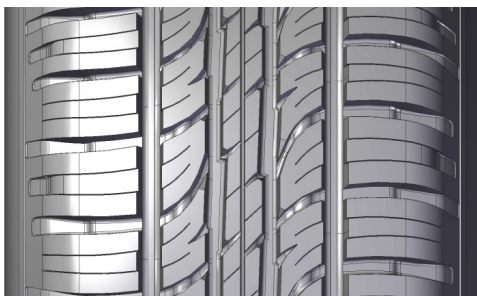
Improved handling in straight-line driving and maneuvering

Contact patch

**VIA TEEI**  
Bosco A/T



Tire width of 205 mm



Tire width of 215 mm or more

**VIA TEEI**  
Bosco H/T

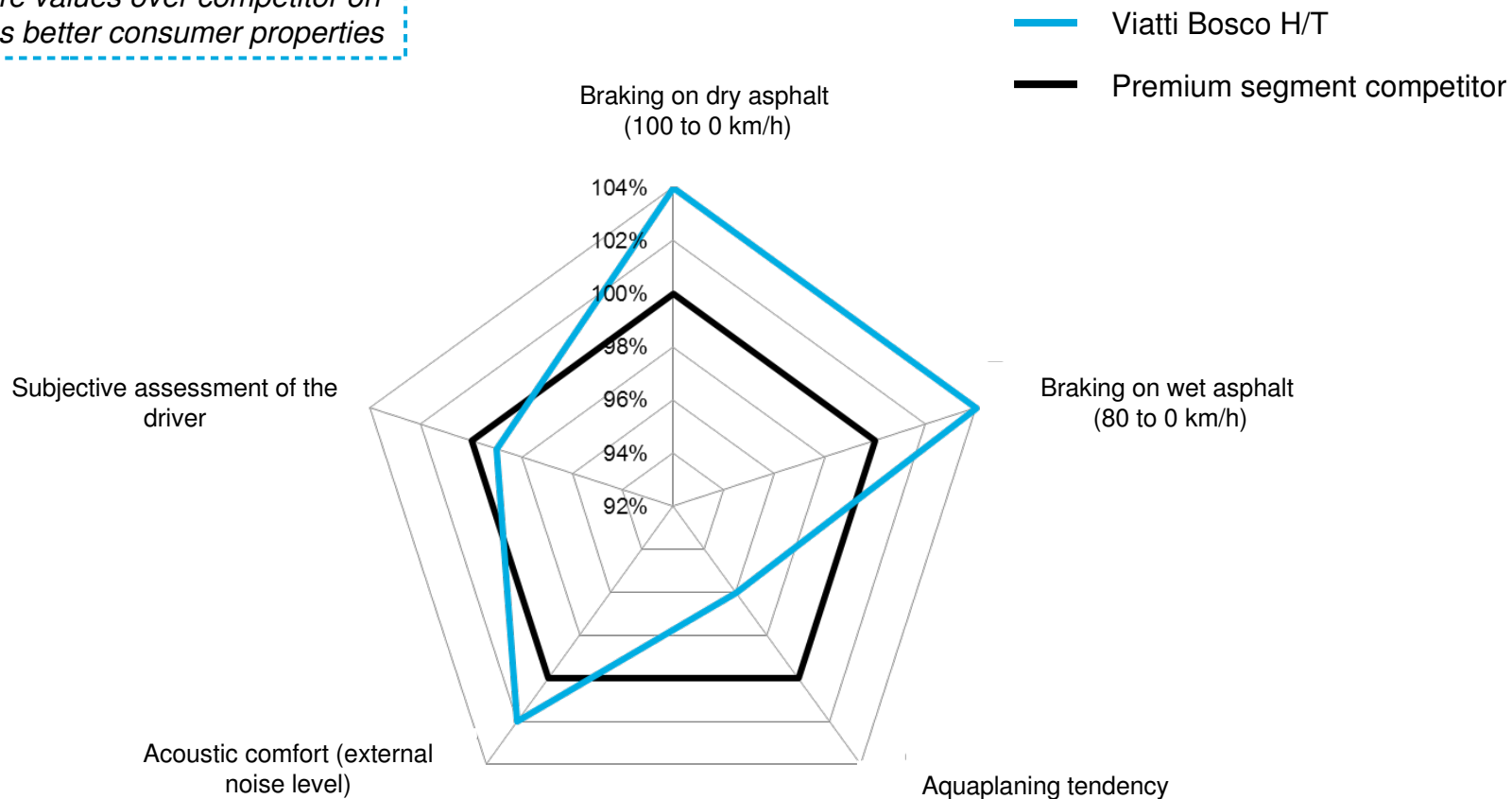


Single tread for all standard sizes

**Bosco A/T** model has two types of tread pattern - tires with a tread width of 215 mm or more have an additional central reinforcing rib.

**Bosco H/T** range includes tires of 215 to 285 mm width, no additional elements were required.

Exceeding Viatti tire values over competitor on the diagram means better consumer properties



The diagram shows the results of a comparative test of the **Viatti Bosco H/T** tire size 215/60R17 with a competitor of the premium price segment at the Idiada proving ground (Spain).

**Viatti Bosco H/T** tires outperformed the established competitor in terms of braking performance on both dry and wet surfaces, as well as the level of acoustic comfort on flat and rough surfaces.



Standard size/Model	Wet grip index	Actual rolling resistance coefficient	Noise, dB
215/65R16 V-238	B	E	69 ))
215/70R16 V-238	C	E	69 ))
215/60R17 V-238	C	F	69 ))
225/60R17 V-238	A	E	70 ))
225/65R17 V-238	A	E	70 ))
235/55R17 V-238	C	C	71 ))
225/55R18 V-238	A	E	71 ))
225/60R18 V-238	B	E	71 ))
235/55R18 V-238	B	E	70 ))
235/60R18 V-238	B	E	71 ))
265/60R18 V-238	A	E	69 )
235/60R16 V-238 *	-	-	-
235/65R17 V-238 *	-	-	-
265/65R17 V-238 *	-	-	-
255/55R18 V-238 *	-	-	-
285/60R18 V-238 *	-	-	-
255/50R19 V-238 *	-	-	-

\* The mass production is planned for the beginning of 2020.

1	205/70R15	96 H		Chevrolet Niva, LADA(BA3) 4x4
2	205/75R15	97 H		Chevrolet Niva, LADA(BA3) 4x4
3	215/65R16	98 H	98 H	Renault Duster, Renault Kaptur, Chevrolet Niva, Nissan Qashqai
4	215/70R16	100 H	100 H	Kia Sportage, Mitsubishi Outlander
5	235/60R16	100 H	100 H	Hyundai Tucson, Chery Tiggo FL, Ford Kuga
6	245/70R16	107 H		Jeep Grand Cherokee, Daewoo Musso, Infiniti QX4
7	215/55R17	94 V		Nissan Juke, Audi Q2, Citroen C5
8	215/60R17	96 H	96 H	Hyundai Creta, Renault Kaptur, Nissan Qashqai
9	225/60R17	99 H	99 V	Kia Sportage, Hyundai Tucson
10	225/65R17	102 H	102 V	Toyota RAV4, Nissan X-Trail, Mazda CX-5
11	235/55R17	99 V	99 V	Ford Kuga, VW Tiguan
12	235/65R17	104 H	104 V	VW Touareg, Audi Q5
13	255/60R17	106 H		Jeep Grand Cherokee, SsangYong Rexton, Honda Pilot
14	265/65R17	112 H	112 V	Haval H9, Mitsubishi L200
15	225/55R18	102 V	102 V	Mitsubishi Outlander, Hyundai Tucson
16	225/60R18		100 V	Nissan X-Trail, BMW X3, Mazda CX5
17	235/55R18	100 H	100 V	VW Tiguan, Toyota RAV4
18	235/60R18	103 H	103 V	Audi Q5, Geely GX9, Hyundai Grand Santa-Fe
19	255/55R18	109 H	109 V	BMW X5, Audi Q7, Land Rover Range Rover Sport
20	265/60R18	110 H	110 H	Cadillac Escalade, Toyota Land Cruiser Prado, Haval H9
21	285/60R18	116 H	116 V	Toyota Land Cruiser, Lexus LX, Hummer H3
22	255/50R19		107 W	BMW X5, Audi Q7, Infiniti QX60, Mercedes-Benz GLE X-Class